

Pursuing Customer's Sustainable Value Realization and Future-Oriented Consulting



GOOD CONSULTING GROUP CO., LTD.

NOV., 2018

GCG (주)굿컨설팅그룹

Rank	Country	Index value	Of which		
			Online service component	Telecommunication infrastructure component	Human capital component
1	Republic of Korea	0.8785	0.3400	0.2109	0.3277
2	United States	0.8510	0.3184	0.2128	0.3198
3	Canada	0.8448	0.3001	0.2244	0.3204

Rank	Country	Index value	Online Service Component	Telecomm. infrastructure component	Human Capital Component
1	Republic of Korea	0.9283	1.0000	0.8356	0.9494
2	Netherlands	0.9125	0.9608	0.8342	0.9425
3	United Kingdom	0.8960	0.9739	0.8135	0.9007
4	Denmark	0.8889	0.9500	0.8015	0.8400
5	United States	0.8687	0.9500	0.8015	0.8400
6	France	0.8635	0.9500	0.8015	0.8400
7	Sweden	0.8599	0.9500	0.8015	0.8400
8	Norway	0.8593	0.9500	0.8015	0.8400
9	Finland	0.8505	0.9500	0.8015	0.8400
10	Singapore	0.8474	0.9500	0.8015	0.8400
11	Canada	0.8430	0.9500	0.8015	0.8400
12	Australia	0.8390	0.9500	0.8015	0.8400
13	New Zealand	0.8381	0.9500	0.8015	0.8400
14	Liechtenstein	0.8264	0.9500	0.8015	0.8400
15	Switzerland	0.8134	0.9500	0.8015	0.8400
16	Israel	0.8100	0.9500	0.8015	0.8400
17	Germany	0.8079	0.9500	0.8015	0.8400
18	Japan	0.8019	0.9500	0.8015	0.8400
19	Luxembourg	0.8014	0.9500	0.8015	0.8400
20	Estonia	0.7987	0.9500	0.8015	0.8400
21	Austria	0.7840	0.9500	0.8015	0.8400
22	Iceland	0.7835	0.9500	0.8015	0.8400
23	Spain	0.7770	0.9500	0.8015	0.8400
24	Belgium	0.7718	0.9500	0.8015	0.8400
25	Slovenia	0.7492	0.9500	0.8015	0.8400
26	Monaco	0.7468	0.9500	0.8015	0.8400
27	Russian Federation	0.7345	0.9500	0.8015	0.8400
28	United Arab Emirates	0.7344	0.9500	0.8015	0.8400
29	Lithuania	0.7333	0.9500	0.8015	0.8400
30	Croatia	0.7328	0.9500	0.8015	0.8400
31	Hungary	0.7201	0.9500	0.8015	0.8400
32	Italy	0.7190	0.9500	0.8015	0.8400
33	Portugal	0.7165	0.9500	0.8015	0.8400
34	Ireland	0.7149	0.9500	0.8015	0.8400
35	Malta	0.7131	0.9500	0.8015	0.8400

Table 1.1. World e-government leaders (Very High EGDI) in 2014

Country	Region	2014 EGDI	2014 Rank	2012 Rank	Change in Rank (2012-2014)
Republic of Korea	Asia	0.9462	1	1	-
Australia	Oceania	0.9103	2	12	↑ 10
Singapore	Asia	0.9076	3	10	↑ 7
France	Europe	0.8938	4	6	↑ 2
Netherlands	Europe	0.8897	5	2	↓ 3
Japan	Asia	0.8874	6	18	↑ 12
United States of America	Americas	0.8748	7	5	↓ 2
United Kingdom	Europe	0.8695	8	3	↓ 5
New Zealand	Oceania	0.8644	9	13	↑ 4
Finland	Europe	0.8449	10	9	↓ 1
Canada	Americas	0.8418	11	11	-
Spain	Europe	0.8410	12	23	↑ 11
Norway	Europe	0.8357	13	8	↓ 5
Sweden	Europe	0.8225	14	7	↓ 7
Estonia	Europe	0.8180	15	20	↑ 5
Denmark	Europe	0.8162	16	4	↓ 12
Israel	Asia	0.8162	17	16	↓ 1
Bahrain	Asia	0.8089	18	36	↑ 18
Iceland	Europe	0.7970	19	22	↑ 3
Austria	Europe	0.7912	20	21	↑ 1
Germany	Europe	0.7864	21	17	↓ 4
Ireland	Europe	0.7810	22	34	↑ 12
Italy	Europe	0.7593	23	32	↑ 9
Luxembourg	Europe	0.7591	24	19	↓ 5
Belgium	Europe	0.7564	25	24	↓ 1
Very High EGDI Average		0.8368			
World Average		0.4712			

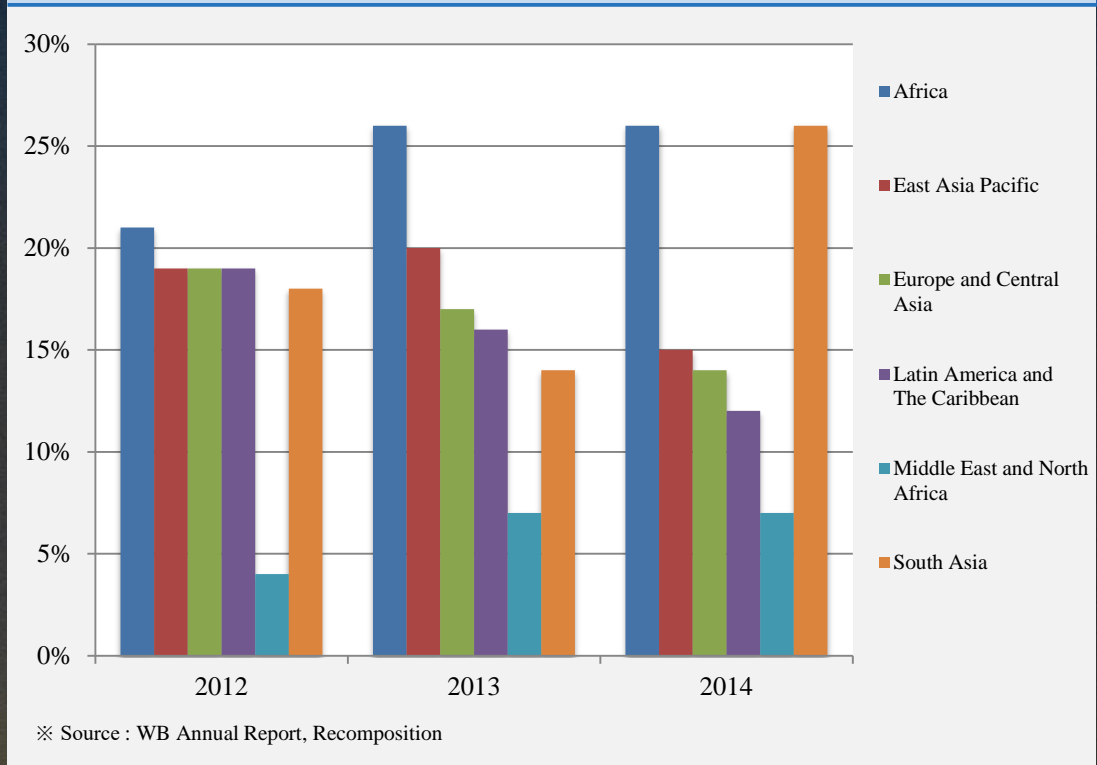


● KON
: WCIT
Excel
(’06)

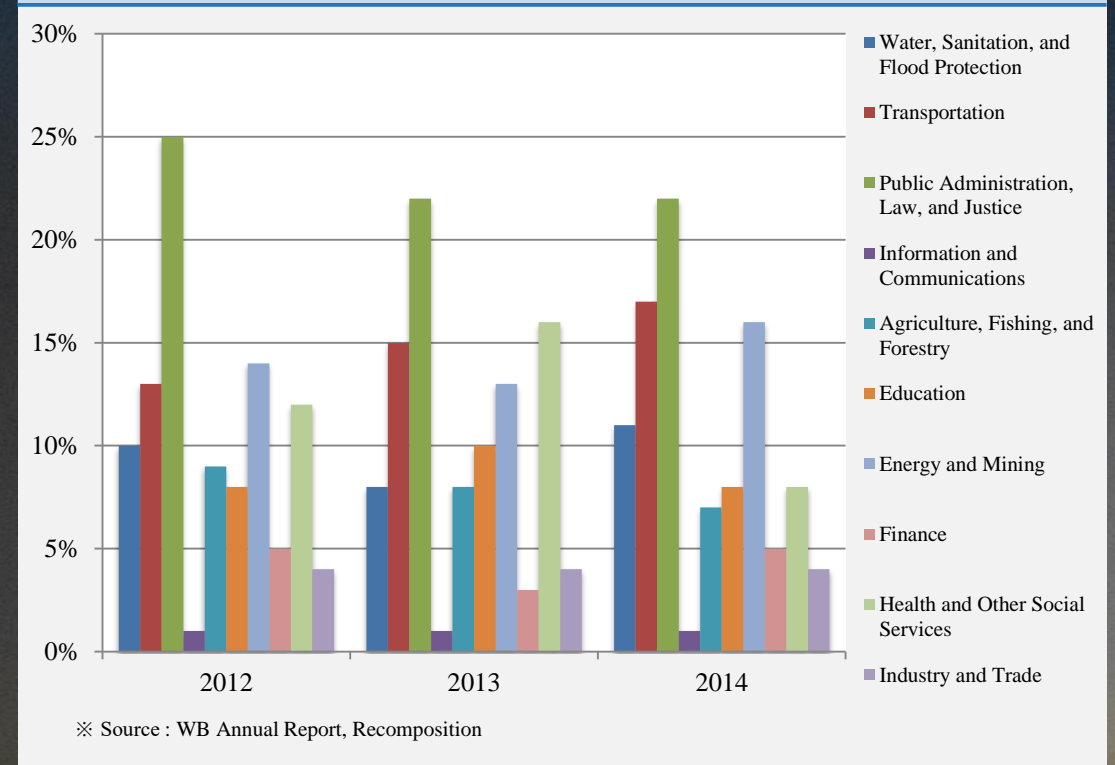
(’06)

Approach Method to World Bank

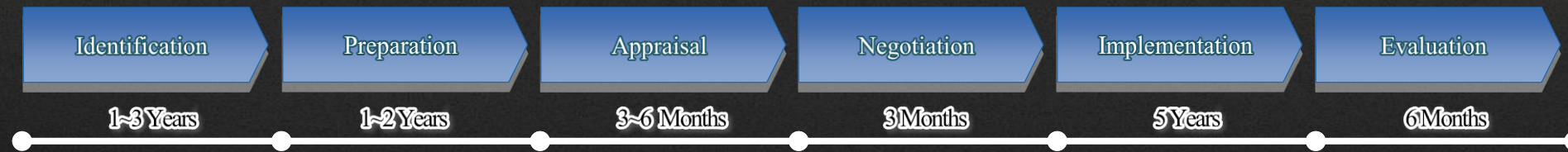
Order Chart of World Bank by Region



Order Chart of World Bank by Field



World Bank Project Order Process



Find the Adequate Case for the Republic of Serbia!

Case

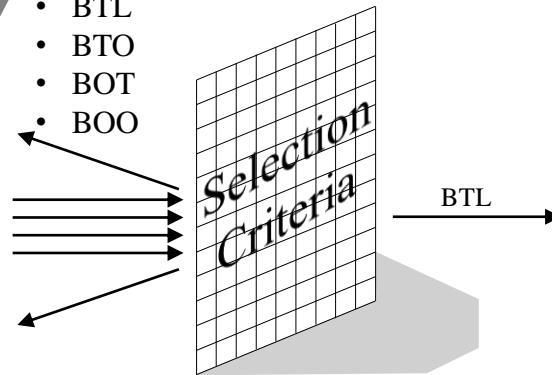
Selection of Private Investment Method for Resource Procurement & Operation

Adopted Service Model

1. Deployment and operation of selected services in the Republic of Serbia
2. Value Added services

Public-Private Cooperation Model Selection

- BTL
- BTO
- BOT
- BOO

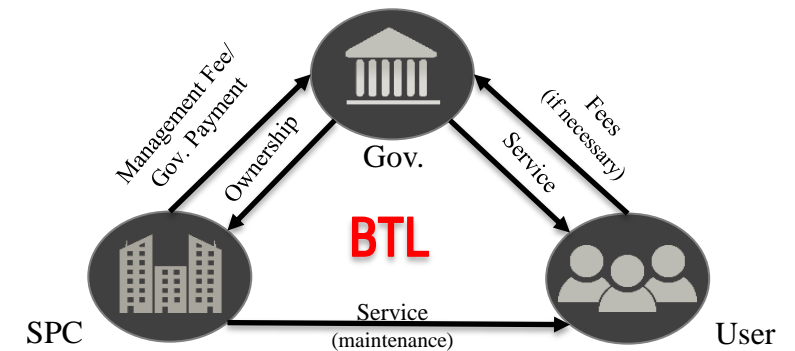


1. Can the end user pay for the service model adopted directly?
2. Is there an alternative to guarantee the deployment and operation costs except the fee payment method of the end-user?
3. What is the model suitable for the legal framework of the Republic of Serbia?

Proposal of Optimal Public-Private Partnership Execution Model

BTL(Build Transfer Lease)

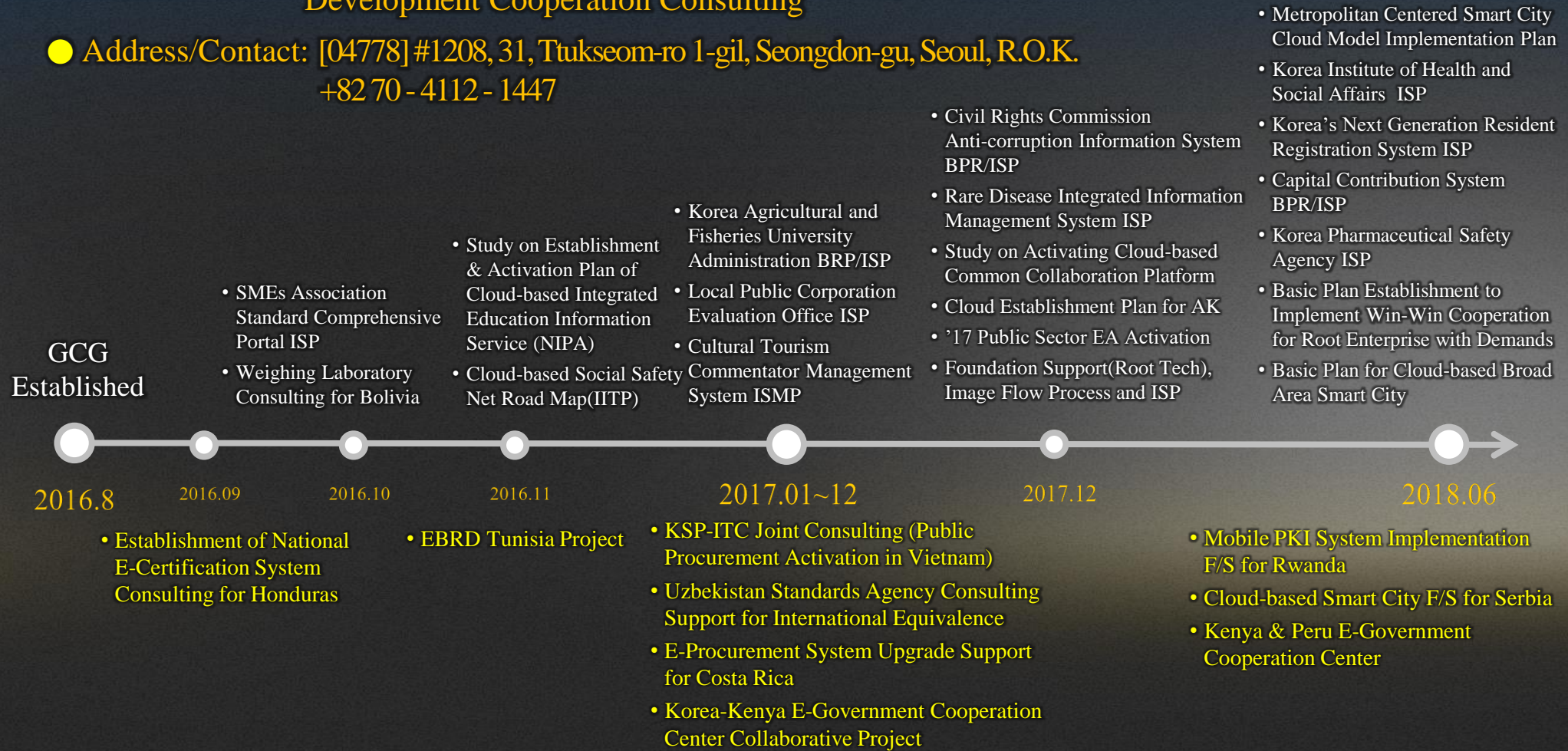
The PPP model proposed by the BTL method refers to the business model in which the government of the Republic of Serbia provides the base (business rights, etc.) and the enterprise implements the selected services and receives the fee form the government.



I. Overview

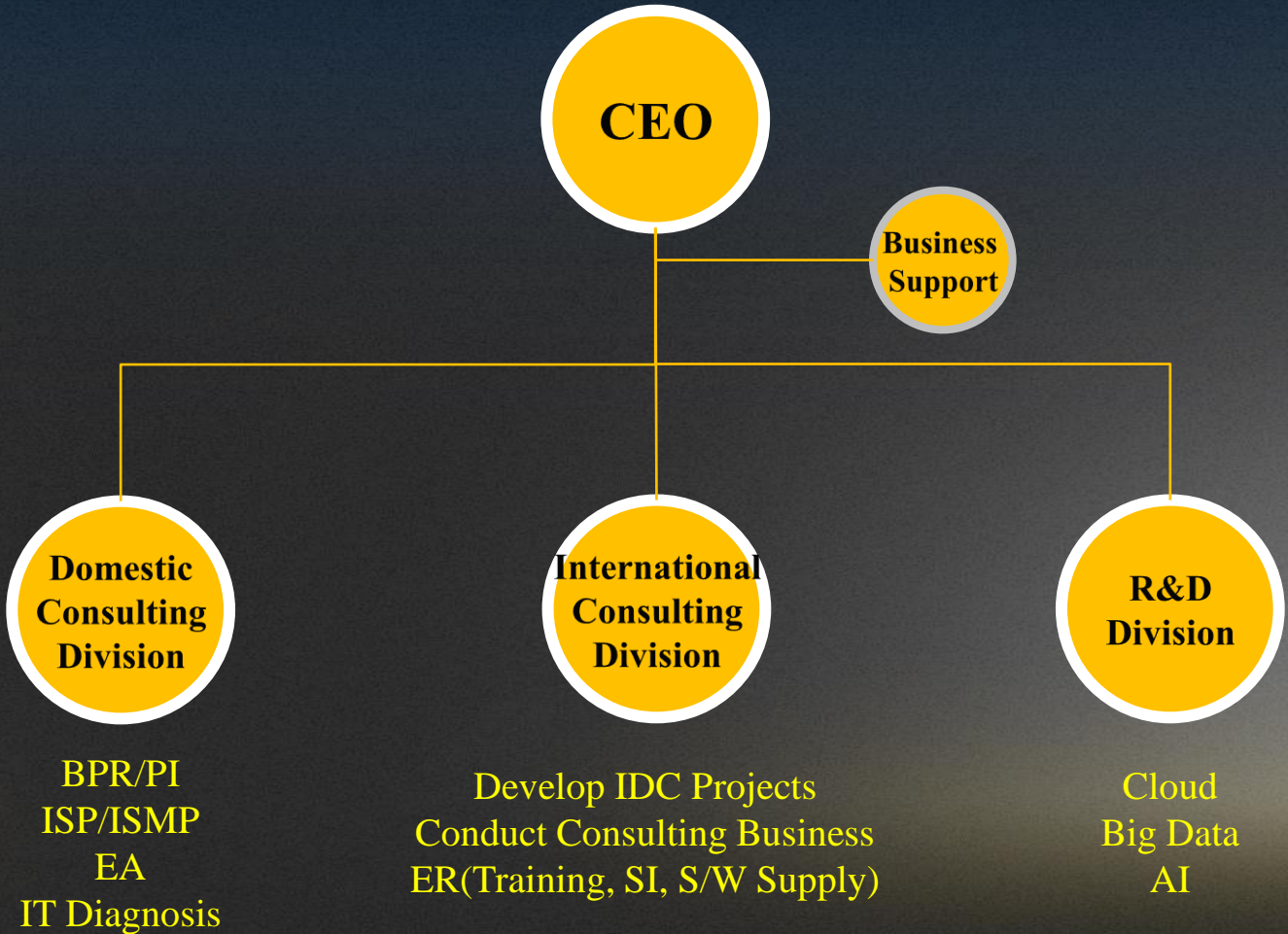
- Business Field : BPR/ISP, EA, IT Performance Diagnosis, E-Government Consulting, Cloud System, Big Data, AI, etc., Latest Technology Appliance Research & Consulting, International Development Cooperation Consulting

- Address/Contact: [04778] #1208, 31, Ttukseom-ro 1-gil, Seongdon-gu, Seoul, R.O.K.
+82 70 - 4112 - 1447



We provide business consulting services to domestic and foreign government/organizations.

II. Organization



We are organized in three divisions; Domestic Consulting Division, International Consulting Division, and R&D Division

III. Our Service



We provide the best future-oriented consulting service to maximize our customer's value.

IV. Our Experience (1/4)

Project Name (Title)	Period	Owner [Contractor]
Computerized High-Tech Project BPR/ISP Consulting	'18.05 ~ '18.11	Korea Machinery Financial Cooperative
Korea's Next Generation Resident Registration System ISP	'18.05 ~ '19.01	NIA
2018 Kenya E-Government Cooperation Center	'18.07 ~ '18.11	NIA
2018 Peru E-Government Cooperation Center	'18.07 ~ '18.11	NIA
Metropolitan Centered Smart City Cloud Model Implementation Plan	'18.06 ~ '18.05	NIPA
Basic Plan Establishment to Implement Win-Win Cooperation for Root Enterprises with Demand	'18.01 ~ '18.05	KITECH
ISP for Upgrading Business System	'18.01 ~ '18.04	Korea Institute for Health and Social Affairs
Information Strategy Planning(ISP) Establishment	'18.04 ~ '18.06	Korea Institute of Drug Safety & Risk Management
2017 Korea-Kenya E-Government Cooperation Center	'17.10 ~ '17.12	NIA
Support Business Image Flow Process & ISP Establishment(Homepage Upgrade Plan for Root Technology Company)	'17.09 ~ '17.12	KITECH
Advanced Information Management System	'17.08 ~ '17.11	Korea Employment Information Service [TG Co., Ltd.]
E-Procurement System Upgrade Support for Costa Rica	'17.07 ~ '17.12	NIA [VTW Co., Ltd.]
LIS(Laboratory Information System) Diagnosis & Direction Setting Consulting	'17.07 ~ '17.07	Green Cross Co., Ltd.
Civil Rights Commission Anti-Corruption Information System BPR/ISP	'17.06 ~ '17.11	Civil Rights Commission [Korea IT Consulting Co., Ltd.]

We are carrying out comprehensive consulting service based on the management strategy change of the demand organization.

IV. Our Experience (2/4)

Project Name (Title)	Period	Owner [Contractor]
Cloud-based Common Collaboration Platform Research Consulting	'17.06 ~ '17.08	NIPA
Rare Disease Integrated Information Management System ISP	'17.05 ~ '17.09	Korea Centers for Disease Control & Prevention [TG Co., Ltd]
Private Cloud System Adoption Plan for AK Group	'17.05 ~ '17.07	COMAS Co., Ltd.
2017 Public Sector EA Activation for Reinforcing Foundation	'17.04 ~ '17.12	NIA [TG Co., Ltd]
Improving the Culture Tourism Commentary Management System Consulting	'17.04 ~ '17.05	Korea Tourism Organization
Local Public Corporation Evaluation Office ISP	'17.03 ~ '17.04	Local Public Corporation Evaluation [Magnet Co., Ltd.]
Securing Uzbekistan Standards Agency's International Equivalence and Establishing Integrated Support System Consulting	'17.01 ~ '18.03	KOICA [UNIDOCs Co., Ltd.]
KSP-ITC Joint Consulting on Revitalizing the Public Procurement Market for Vietnam	'17.01 ~ '17.07	Korea EXIM Bank [Soft I Tech Co., Ltd.]
Korea Agricultural and Fisheries University Administration Management Process Improvement Consulting (BPR/ISP)	'16.11 ~ '17.02	Ministry of Agriculture, Food and Rural Affairs [Tech One Co., Ltd.]
Facilitating Participation from SMEs in Public Tenders Conducted on the Tunisian e-Procurement System-Upgrading/Replacing the Helpdesk of the Public Procurement Authority of Tunisia	'16.11 ~ '17.04	EBRD [Soft I Tec Co., Ltd]
Establish Roadmap for Cloud-based Intelligent Social Safety Net	'16.11 ~ '16.12	IITP [Beyond Advisory Service Co., Ltd.]
Cloud-based Integrated Education Information Service Implementation and Activation Plan	'16.11 ~ '16.12	NIPA [Beyond Advisory Service Co., Ltd.]

We are carrying out comprehensive consulting service based on the management strategy change of the demand organization.

IV. Our Experience (3/4)

Project Name (Title)	Period	Owner [Contractor]
Establishment of Group Standard Comprehensive Portal ISP Consulting	'16.10 ~ '17.01	SMEs Association [TG Co., Ltd.]
Weighing Laboratory Test Equipment Delivery Installment and Environment Implementation Consulting Support	'16.10 ~ '17.03	Korea Testing Certification [ICOMER Co., Ltd.]
Policy Suggestions on National Electronic Signature System Introduction for Honduras	'16.09 ~ '17.06	KDI

We are carrying out comprehensive consulting service based on the management strategy change of the demand organization.

IV. Our Experience (4/4)

* Goal : Secure 30 overseas partners and branch offices in developing countries until 2020

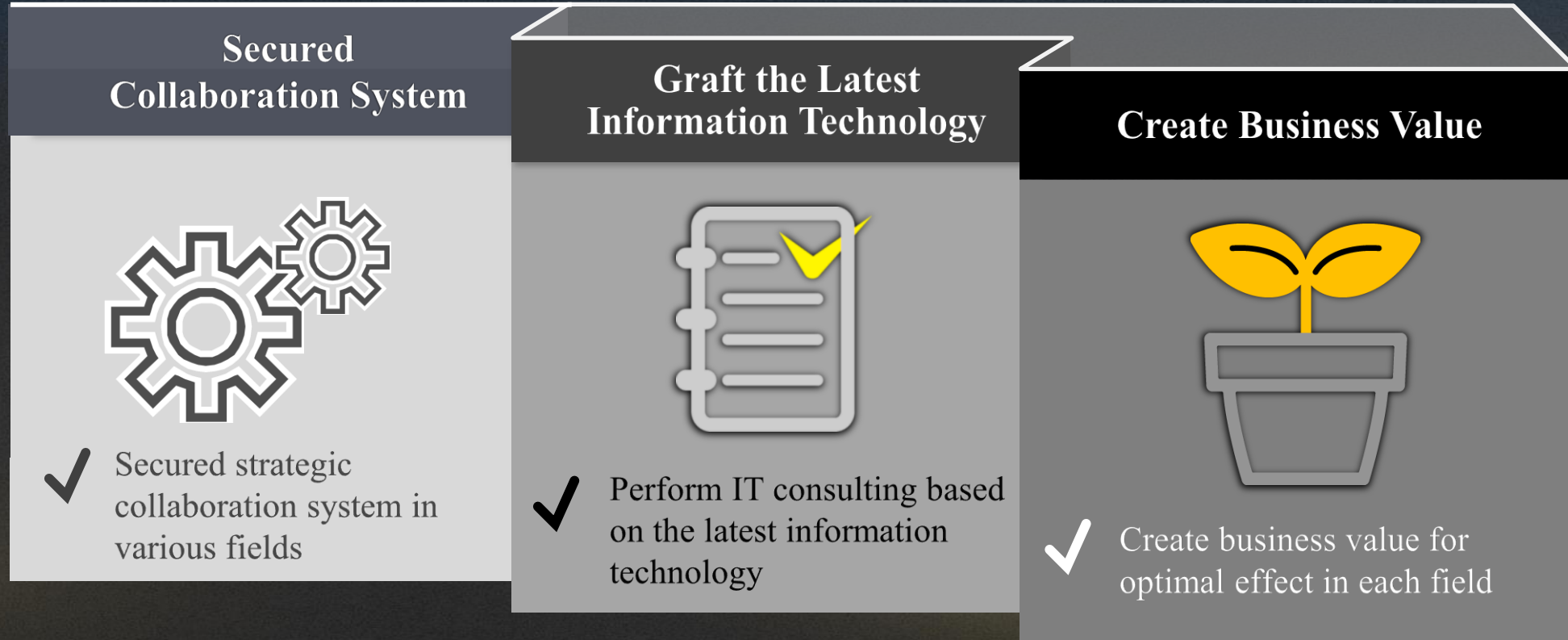
● GCG Experience

● Member Experience



We are working on overseas consulting business for e-Government export.

V. Cooperation



We seek to create business value through collaboration with specialized companies.



**For Questions & Inquiries,
Contact IT Consulting Division
URL: <http://www.goodcosulting.co.kr>**

Director JIHYUN GO

**E-Mail : jennith.go@goodconsulting.co.kr
jennith01@gmail.com**

Mobile : +82-10-3652-2021